

Corporate Data (As of March 31, 2023)

JSR Corporation

JSR Corporation Established
December 10, 1957

Capital (Common Stock)
23,370 million yen

Employees
7,994

Closing date
JSR books are closed on
March 31 each year.

Shareholders Information

Stock Listing
Tokyo Stock Exchange

Number of Shareholders
17,294

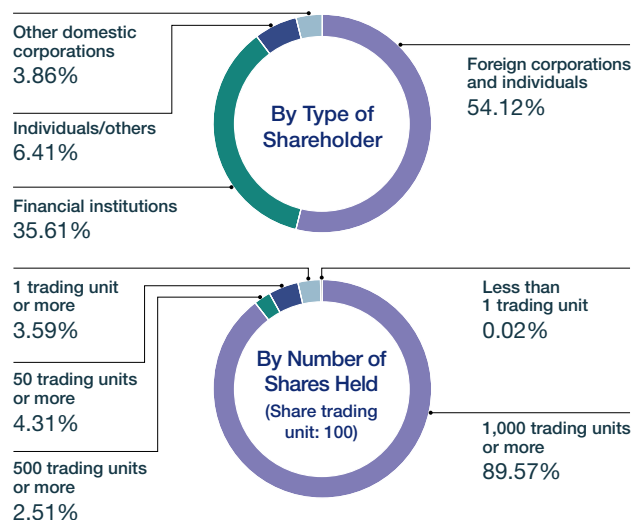
Number of Shares Issued
208,400,000 shares

Major Shareholders

Name of Shareholder	% of shares held/voting rights	Number of shares held (thousands)
The Master Trust Bank of Japan, Ltd. (trust account)	16.00	33,222
SSBTC CLIENT OMNIBUS ACCOUNT BRITISH VIRGIN ISLANDS/U.K.	9.00	18,687
SSBTC CLIENT OMNIBUS ACCOUNT	6.99	14,514
Custody Bank of Japan, Ltd. (trust account)	5.13	10,650
JP MORGAN CHASE BANK 385632	3.62	7,505
STATE STREET BANK AND TRUST COMPANY 510312	2.63	5,454
MSCO CUSTOMER SECURITIES	2.52	5,238
STATE STREET BANK AND TRUST COMPANY 510311	2.22	4,610
ML PRO SEGREGATION ACCOUNT	2.01	4,164
Nippon Life Insurance Company	1.79	3,717

Composition of Shareholders

	Shareholder	Shares held (thousands)
Individuals and others	16,343	13,310
Foreign corporations and individuals	638	112,329
Other domestic corporations	208	8,021
Financial institutions	104	73,925
Treasury stock	1	814
Total	17,294	208,400



Ordinary General Meeting of Shareholders

The annual General Meeting of Shareholders is held in June each year. The 2022 annual General Meeting was held on June 16, 2023.

Transfer Agent and Register

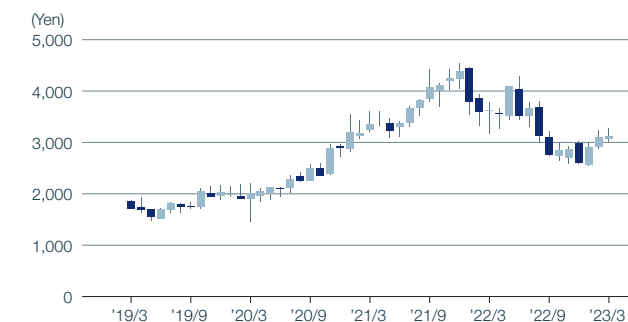
SUMITOMO MITSUI TRUST BANK, LIMITED

Independent Auditors

KPMG AZSA LLC

Common Stock Price Range (Yen/share: Tokyo Stock Exchange)

		1st Q	2nd Q	3rd Q	4th Q
FY2011	High	1,724	1,655	1,582	1,790
	Low	1,413	1,221	1,218	1,408
FY2012	High	1,695	1,455	1,644	1,994
	Low	1,255	1,274	1,224	1,670
FY2013	High	2,360	2,073	2,049	2,085
	Low	1,748	1,713	1,663	1,694
FY2014	High	1,933	1,975	2,229	2,205
	Low	1,622	1,681	1,711	1,893
FY2015	High	2,296	2,227	2,054	1,903
	Low	1,998	1,626	1,688	1,455
FY2016	High	1,682	1,635	1,872	2,115
	Low	1,292	1,287	1,437	1,835
FY2017	High	2,082	2,177	2,320	2,758
	Low	1,794	1,871	2,035	2,215
FY2018	High	2,425	2,229	2,177	1,909
	Low	1,803	1,824	1,530	1,526
FY2019	High	1,914	1,836	2,165	2,196
	Low	1,475	1,621	1,699	1,452
FY2020	High	2,127	2,557	2,959	3,600
	Low	1,840	2,004	2,346	2,809
FY2021	High	3,595	4,425	4,530	4,465
	Low	3,080	3,290	3,680	3,150
FY2022	High	4,285	3,210	3,010	3,280
	Low	3,430	2,727	2,566	3,010



*1 The numbers in the columns under "Number of shares held" are rounded to thousands of shares. *2 The Company holds 814,227 shares of treasury stock.

*3 The shareholding ratio is calculated by using 207,585,773 shares (calculated by deducting number of treasury shares from total number of issued shares 208,400,000 shares)

*4 The Company acquired 7,680,000 shares of treasury stock pursuant to the resolution passed by the Board of Directors at its meeting on April 25, 2022.

*5 The Company cancelled 17,726,145 shares of treasury stock on August 15, 2022 pursuant to the resolution passed by the Board of Directors at its meeting on August 1, 2022.