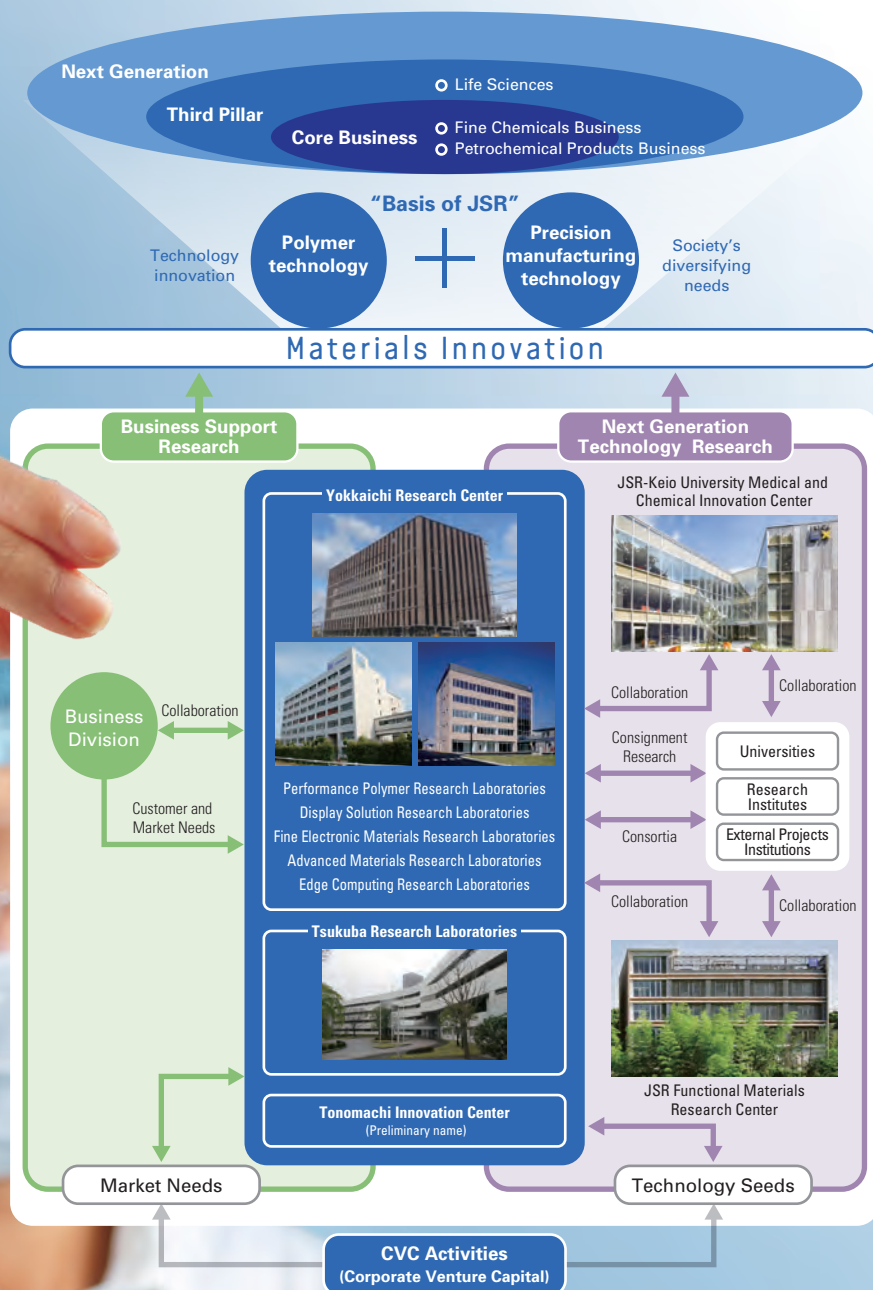


## R&D POLICY AND ORGANIZATION



With deep expertise in its core polymer and precision manufacturing technologies, JSR Group has widened the scope of its technological domains by integrating technologies from disparate fields such as photochemistry, inorganic chemistry, precision processing, and biotechnologies. On this basis, the Group has advanced R&D activities, and its accumulated efforts have enabled it to develop unique strengths relative to chemical companies worldwide, which is our driving force to expand superior materials and technologies globally.

JSR Group's main R&D centers are located at Yokkaichi City in Mie Prefecture and Tsukuba City in Ibaraki Prefecture. There we carry out R&D activities aimed at tracking swiftly evolving societal needs such as the changes that are emanating from the digital revolution.

Our R&D mission can be broadly divided into two categories: "business support research" for business domains we are developing, and "next-generation technology research," such as novel and applied research for peripheral fields. In promoting research, we emphasize close linkages in the Group's value chain, ranging from market development to process development and manufacturing technology development, and extending to manufacturing, sales, and distribution. We also promote integration within the system, with researchers themselves making direct contacts to customers to uncover their needs. Moreover, we are enhancing technical services in various countries and building a system capable of providing global and timely support for customers' business promotion activities.

For next-generation technology and seed research, it is necessary for R&D to anticipate latent market needs. Particularly in the case of new R&D fields, we promote open innovation such as joint research with universities and research institutions in Japan and overseas. We have established the JSR-Keio University Medical and Chemical Innovation Center (JKiC), a joint research facility on Keio University's Shinanomachi campus, which opened in October 2017.

We will create innovation through investigating the wholly novel concept of fusing medicine and chemistry, which will lead to establish practical technologies that contribute to global society with people living long and healthy lives.